



**SHIAWASSEE COUNTY**  
**HEALTH DEPARTMENT**  
*Promoting Wellness. Protecting Health.*

# 2024 Annual Report



the  
**COUNTY** of  
**SHIAWASSEE**  
*established in 1822*



## A MESSAGE FROM OUR DIRECTOR/HEALTH OFFICER

# Larry Johnson, R.S., M.S.

June 2025

On behalf of the Shiawassee County Board of Commissioners and the Shiawassee County Board of Health, I am proud to present the 2024 Shiawassee County Health Department annual report. This report reflects the efforts and commitment of employees, elected officials, board members, citizens, and community partners in making Shiawassee County a healthy community.

### Highlights Of 2024 Include:

- The Emergency Preparedness Program launched a Stop the Bleed initiative at Perry Public Schools in collaboration with Memorial Healthcare and the Perry Police Department.
- Conducted two Household Hazardous Waste (HHW) collections in Perry and Owosso. Between our two collections we collected 23,070 lbs. of HHW waste that otherwise would have been improperly disposed of in a landfill or into the environment.
- Hired and trained three new field staff in the Environmental Health Division.
- Conducted scrap tire collection as part of the annual Shiawassee River Cleanup in July and collected 756 tires.
- State accreditation was renewed during cycle 8 in April. Multiple programs received special recognition.
- The Materials Management (MM) program was initiated. The focus is on recycling throughout the county. The MM board has been appointed, and the first meeting was held in June.
- Partnered with the Shiawassee Prevention Network to install a Sharps Drop Box outside the Health Department. Hundreds of pounds of needles, syringes, epi-pens, and insulin pens have been properly disposed of through the drop box.
- Held the 2nd Annual Back to School Health Fair. Partnered with many local agencies to provide services to families.
- Hosted a drive-up flu and COVID-19 clinic in October.
- Partnered with the Greater Lansing Diaper Bank to offer free diapers to those who qualify.
- Participated in the Take Control of Your Birth Control campaign. Offering free O-Pill, Plan B, and condoms to residents.
- Partnered with the Shiawassee Prevention Network to develop an Overdose Fatality Review Team and conducted first meeting in 2024.
- Restarted Maternal Infant Health Program (MIHP) and hired a Nurse and Social Worker.
- Held weekly breastfeeding walk-in clinics and the clinics were a great success. Conducted 172 hospital visits to delivering moms and 648 Clients received breastfeeding help through our Women Infant Children (WIC) Program.

In 2024, we completed a strategic planning process to direct where we would like to go for the next five years. As we reflected, we were reminded of our amazing staff and community partners who have helped us accomplish so much already. We look forward to celebrating our past successes as an organization and to a bright future continuing to serve the residents of Shiawassee County.

Sincerely,

Larry Johnson, R.S., M.S.  
Health Director

## PROGRAM HIGHLIGHT #1

# Back to School Health Fair

In July 2024, SCHD hosted our second Back to School Health Fair! SCHD partnered with multiple community partners to provide a small community health clinic during the event. Participants were able to get immunized, have a vision or hearing screening completed, a lead test, sports physical exams, mental health screening, dental screening and more.

Our partnerships allowed us to provide these services all in one location for families to access programs and services as they were getting ready to head back to school.



During the event,  
**55**  
children  
received services.

A total of  
**93**  
individuals  
attended the event.

### Our Community Partners for this Event Included:

- Catholic Charities
- Great Lakes Bay Health Center
- Great Start Shiawassee
- Memorial Healthcare
- Meridian Health Plan
- MSU Extension
- Shiawassee Health and Wellness
- U of M - Sparrow

## PROGRAM HIGHLIGHT #2

# Harm Reduction Efforts

In September, the Shiawassee Prevention Network (SPN) and our Harm Reduction Program took a significant step forward in promoting community safety and public health by installing a sharps disposal bin. This new resource provides a safe, and accessible location for proper sharps disposal, helping to reduce the risk of accidental exposure to possible infectious diseases, and decreases unwanted medical waste litter.

Since its placement, the bin has allowed individuals to safely dispose of used needles/syringes and other sharps, supporting our mission to protect both individuals and the community from harm. This initiative not only enhances public safety but also aligns with our ongoing efforts to promote health and wellness.

We are proud to offer this service and remain committed to expanding harm reduction efforts in our community.



Our new sharps disposal bin is located out front of the Shiawassee County Health Department.



Nicole Greenway, MPH, RN, Director of Personal & Community Health, SCHD and SPN Secretary;  
Barb Botke, SPN Treasurer, Catholic Charities;  
Rebecca Dahlke, SPN Chair, Memorial Healthcare.

## PROGRAM HIGHLIGHT #3

# Virtual Learning Collaborative (VLC)

Shiawassee County Emergency Preparedness was selected to participate in a Virtual Learning Collaborative (VLC) aimed at training maternal-child health (MCH) and emergency preparedness and response (EPR) professionals at local health departments (LHDs) on integrating MCH considerations into emergency planning.

The VLC included training exercises and case study discussions designed to help our health department develop strategies to enhance our capacity to prioritize MCH populations in emergency preparedness, response, recovery, and mitigation efforts.

The program culminated in a full-day tabletop exercise at the 2024 NACCHO360 Conference in Detroit, where we collaborated with peers from across the country to apply the knowledge gained over the past five months. This experience provided an opportunity to refine our approach to supporting MCH populations before, during, and after disasters. It also allowed us to exchange best practices, learn from other communities, and bring fresh ideas back to Shiawassee County to strengthen our emergency preparedness efforts.

We will continue to refine and implement the insights gained through the VLC, integrating them into our emergency preparedness strategies to better serve our MCH populations. By applying these best practices, we aim to strengthen our response efforts, enhance community partnerships, and ensure the well-being of mothers and children before, during, and after emergencies.



## PROGRAM HIGHLIGHT #4

# Household Hazardous Waste Collections (HHW)

Our Household Hazardous Waste (HHW) Collection Program continues to provide residents with a safe and responsible way to dispose of hazardous materials, protecting both public health and the environment.

These events help prevent harmful chemicals from contaminating our soil and waterways while promoting a cleaner, safer community. We are grateful to all residents who participated and remain committed to expanding our efforts in responsible waste disposal.

Stay tuned for future collection events!



In our 2024 collection events,  
we successfully gathered  
a total of  
**23,016**  
pounds of hazardous waste  
from **229** households  
across two locations

### Owosso Collection

- 137 households participated
- 11,510 pounds collected

### Perry Collection

- 92 households participated
- 11,506 pounds collected



## A MESSAGE FROM OUR MEDICAL DIRECTOR Dennis Chernin, M.D., M.P.H.

I am honored to mark my 40th year as Medical Director of the Shiawassee County Health Department. It has been a profound privilege to work alongside the dedicated staff of the department, whose tireless commitment to serving our community continues to inspire me.

Under the leadership of Health Officer Larry Johnson, we have built a strong and cohesive team across administration, nursing, and public health services. Their selfless efforts to prevent and address a wide range of health conditions and social challenges are the backbone of our mission.

The past five years have brought significant public health challenges. Our team responded to the COVID-19 pandemic with remarkable resilience – implementing effective mitigation strategies, launching widespread public education campaigns, and organizing mass vaccination clinics. These efforts saved countless lives and reduced hospitalizations across the county.

More recently, we have supported the rollout of new and updated vaccines, including those for RSV, pneumococcal disease, influenza, and the Omicron variant of COVID-19. Currently, we are responding to a measles outbreak with focused epidemiological investigations and preparations to immunize at-risk children and adults.

**Dennis Chernin, M.D., M.P.H.**  
Medical Director



## DIVISION SNAPSHOT

# Environmental Health

### Onsite Sewage

- 142** Sewage Permits Issued
- 125** Septic System Inspections

### Onsite Water Supply

- 121** Water Well Permits Issued
- 83** Wells Inspected
- 21** Pre-Drilling Site Inspections

### Soil Erosion & Sedimentation Control

- 119** Site Plan Reviews
- 56** Permits Issued
- 42** Waivers Issued

### Point of Sale Program

- 792** Point of Sale Reviews
- 97** Septic Nonconformance
- 48** Well Nonconformance

### Long-Term Monitoring Activities

- 1** Long Term Monitoring Site
- 1** Sample Taken
- 0** Contaminated Wells Found

### Campground Inspections

- 8** Campgrounds Inspected
- 4** Temporary Campgrounds

### Body Art Facilities

- 10** Body Art Facilities Inspected

### Department of Health and Human Services (DHHS) Facilities:

- 17** DHHS Facilities Inspected

### Public Swimming Pools

- 11** Public Swimming Pools Inspected

### Scrap Tire Collection

- 756** Tires Collected
- 17,803** Tires Collected to Date

### Septage

- 2** Land Application Site Inspections
- 2** Pumper Trucks Inspected

### Food Establishments Inspected

- 237** Food Service Licenses Issued
- 400** Restaurant Inspections (includes routine, pre-openings, and follow-ups)
- 10** Restaurant Plan Reviews
- 59** Temporary Food Establishments (TFE) Licenses
- 25** Food Service Complaints Investigated\*

### Non-Community Water Supplies

- 121** Samples
- 64** Inspections

### Household Hazardous Waste

#### Owosso Collection

- 137** Number of Households
- 11,510** Pounds Collected

#### Perry Collection

- 92** Number of Households
- 11,506** Pounds Collected
- 23,016** Total Weight Collected through Program

\*Excludes routines, pre-openings, and follow-ups

## DIVISION SNAPSHOT

# Family Health Services

### Children's Special Healthcare Services

- 350** Total Clients Enrolled
- 1,562** Total Encounters
- 8** Plans of Care

### Lead Screenings

- 108** Elevated Capillary Tests
- 19** Elevated Venous Tests
- 0** Nurse Case Management Visits
- 1,493** Lead Tests Reviewed

### Vision Screenings

- 5,935** Screenings

### Hearing Screening

- 2,896** Screenings

### Pregnancy Testing

- 27** Tests Completed

### Durand School Wellness Program

- 951** Nurse Visits
- 495** Mental Health Visits
- 277** Non-duplicated Students Served
- 352** Health Education Class Students

### Perry School Wellness Program\*

- 815** Nurse Visits
- 808** Mental Health Visits
- 287** Non-duplicated Students Served
- 628** Health Education Class Students

\*Program began in April 2024



### Maternal Infant Health Program†

- 3** Maternal Visits
- 148** Infant Visits
- 50** Total families Enrolled

### Women, Infants and Children Program

- 1,546** Total Participants
- \$1,326,639.62** WIC Dollars Integrated into the Local Economy

### Breastfeeding

- 38** IBCLC Non-WIC Clients
- 228** Individuals with IBCLC Visit
- 385** Individuals with CLC Visit
- 167** Hospital Contacts
- 828** Individuals that Received Breastfeeding Assistance

\*Program began in April 2023. † Program paused March 2023 through December 2023.

DIVISION SNAPSHOT

# Personal Health Services

**STI**

**90** Chlamydia  
**25** Gonorrhea

**Wear One**

**53,270** Individual Condoms Distributed  
**5,327** Bags of Condoms Distributed  
**22** Wear One Partners

**Narcan “naloxone”**

**194** Boxes distributed

**Rabid Animals**

**3** Rabid Animals

**Immunizations**

**722** Immunizations (excluding COVID & Flu)  
**203** Flu Vaccines  
**142** COVID-19 Vaccines

**HIV**

**3** Tests Administered

**Court Ordered Testing**

**9** Court Ordered Tests Administered

**TB Tests**

**109** Tests Administered



**SHIAWASSEE COUNTY**

## Communicable Disease Report 2024

Disease Group	Disease	Total
COVID19/MIS	Multisystem Inflammatory Syndrome	0
COVID19/MIS	Novel Coronavirus COVID-19	1,052
Carbon Monoxide Poisoning	Carbon Monoxide Poisoning	1
Foodborne	Campylobacter	24
Foodborne	Cryptosporidiosis	5
Foodborne	Giardiasis	8
Foodborne	Salmonellosis	12
Foodborne	Shiga toxin-producing Escherichia coli (STEC)	5
Foodborne	Yersinia enteritis	6
Influenza	Flu Like Disease*	1,491
Influenza	Influenza	28
Meningitis	Meningitis - Aseptic pneumoniae, Inv	1
Streptococcus		4
Other	Candida auris	2
Other	Cyclosporiasis	1
Other	Gastrointestinal Illness	1,072
Other	Guillain-Barre Syndrome	1
Other	Histoplasmosis	3
Other	Legionellosis	2
Rabies	Rabies Animal	3
Rabies	Rabies: Potential Exposure & PEP	25
STD	Chlamydia (Genital)	89
STD	Gonorrhea	25
STD	Syphilis - Early Latent	1
STD	Syphilis - Primary	2
STD	Syphilis - Secondary	1
STD	Syphilis - Unknown Duration or Late	6
Tuberculosis	Latent Tuberculosis Infection	7
Tuberculosis	Nontuberculous Mycobacterium	13
Tuberculosis	Tuberculosis	1
VPD	Chickenpox (Varicella)	1
VPD	Pertussis	33
VPD	Shingles	1
VPD	VZ Infection, Unspecified	2
Vectorborne	Lyme Disease	5
Viral Hepatitis	Hepatitis A	0
Viral Hepatitis	Hepatitis B, Acute	0
Viral Hepatitis	Hepatitis B, Chronic	2
Viral Hepatitis	Hepatitis C, Chronic	11



## DIVISION SNAPSHOT Community Health & Outreach

**25** Outreach Events  
**284** Social Media Posts

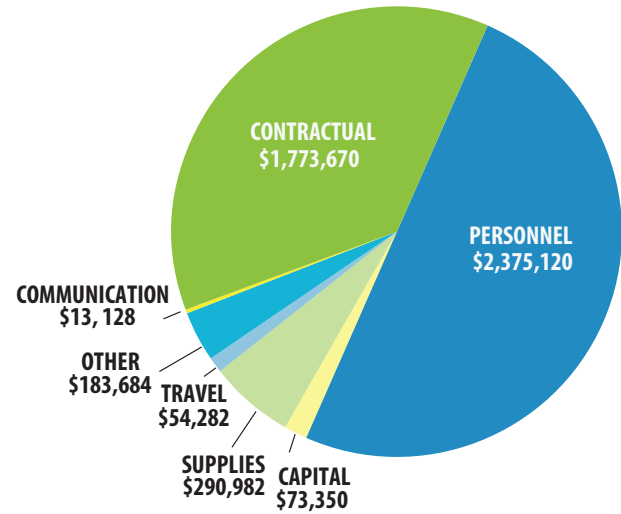
### Menstrual Product Initiative

**3,948** Individual Pads  
**4,724** Individual Tampons  
**0** Red Drop Period Kits  
**9** New Schools Enrolled  
**10\*** Total Participating School Districts

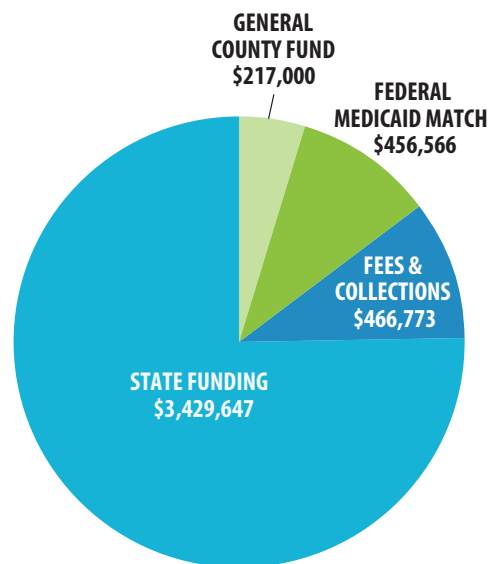
\* Including Chesaning and Ovid-Elsie

# Financial Highlights

CY 2024 EXPENSES



CY 2024 REVENUE



## EXPENDITURES BY PROGRAM

	CY2023	CY2024	CY2023-CY2024
<b>Personal &amp; Community Health</b>			
HIV	\$31,757	\$19,471	\$(12,287)
Maternal Child Health Block Grant	19,352	25,611	\$6,258
Children's Special Health Care Services	86,190	89,611	\$3,422
Communicable Disease	69,077	189,389	\$120,312
Court Mandated Testing	611	1,365	\$754
Hearing	105,060	67,870	\$(37,190)
Opening Schools HRA	918,391	1,400,648	\$482,257
Immunizations	311,358	247,813	\$(63,544)
Lead Screening	21,799	21,261	\$(538)
Maternal Infant Health Program	53,027	159,740	\$106,713
Pregnancy Testing	-	220	\$220
School Wellness Program (Durand)	204,041	194,684	\$(9,357)
School Wellness Program (Perry)	195,435	206,172	\$10,737
Sexually Transmitted Disease	7,367	2,552	\$(4,815)
WIC Breastfeeding Peer Counselor Program	75,739	80,941	\$5,202
Vision	106,643	64,850	\$(41,793)
WIC	412,693	488,215	\$75,522
MPHI Well Being Grant	3,472	2,500	\$(972)
ELC Covid 19 Contact Tracing-Testing- Infection Prevention	156,661	166,737	\$10,076
Covid Immunization	105,100	94,643	\$(10,456)
<b>Total Personal &amp; Community Health Expenditures</b>	<b>\$2,883,773</b>	<b>\$3,524,295</b>	<b>\$640,522</b>
<b>Environmental Health</b>			
Adult & Child Care FAC's	\$3,957	\$3,555	\$(402)
Body Art	3,054	2,752	\$(302)
Campground Inspections	3,812	2,511	\$(1,301)
Conservation District Grant	-	-	\$-
EH Food	194,576	176,263	\$(18,313)
EH Public Complaints	1,212	185	\$(1,028)
Household Hazardous Waste	4,395	3,208	\$(1,188)
Long Term Monitoring	3,270	420	\$(2,850)
Point of Sale	86,031	85,468	\$(563)
Public Swimming Pools	2,589	4,551	\$1,962
Public Water	74,718	126,784	\$52,067
Radon	124	412	\$288
Septage Inspections	2,488	1,109	\$(1,379)
Sewage Program	135,697	135,306	\$(391)
Shiawassee River Cleanup Grant	4,501	5,413	\$911
Soil Erosion	56,989	51,606	\$(5,383)
Water Program	83,259	82,014	\$(1,244)
<b>Total Environmental Health Expenditures</b>	<b>\$728,156</b>	<b>\$681,556</b>	<b>\$20,883</b>
<b>Emergency Preparedness</b>			
	<b>\$132,893</b>	<b>\$144,834</b>	<b>\$11,941</b>
<b>Total Expenditures</b>	<b>\$3,744,822</b>	<b>\$4,350,685</b>	<b>\$605,862</b>

# Partnerships

The Shiawassee County Health Department would like to recognize the partnerships and support that we have received over the years! Partnerships within the community allow the health department to continue offering unique programming and comprehensive public health services within our jurisdiction.

## 2025 Board of Health

### Mary Buginsky

Chairperson

### Patricia Cords

Vice Chairperson/Finance Chair

### Cindy Garber

Commissioner

### Gary Holzhausen

Commissioner

### John Morovitz

Member

### Kevin Smith

Member

### Joy Welty

Member

## Administration Team

### Larry Johnson, R.S., M.S.

Director/Health Officer

### Derek Burton, B.B.A.

Director of Finance & Administrative Services

### Casey Elliott, R.E.H.S.

Director of Environmental Health

### Nicole Greenway, M.P.H., R.N.

Director of Personal/Community Health

### Dennis Chernin, M.D., M.P.H.

Medical Director

### Jodi DeFrenn, B.B.A.

Emergency Preparedness Coordinator



## Our Mission

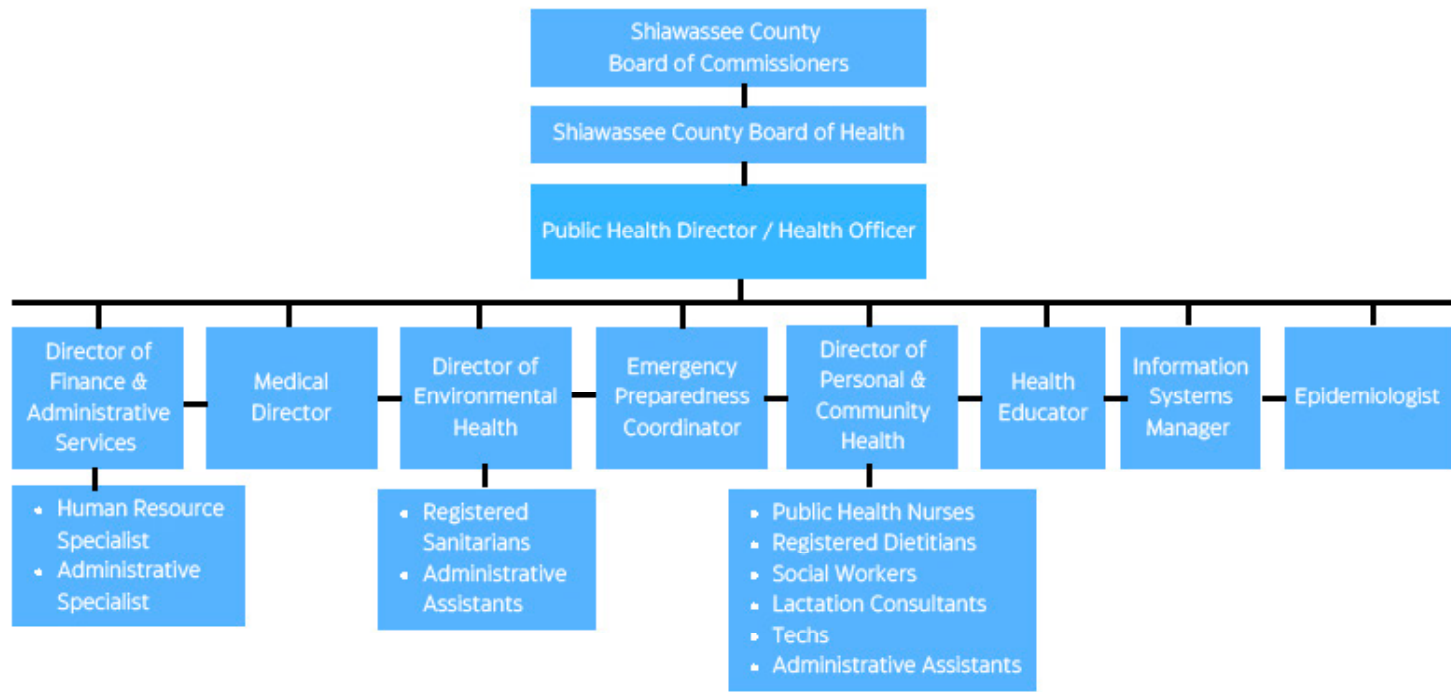
The Shiawassee County Health Department improves the health and wellness of the county through prevention, education, protection, health promotion, and delivery of services in collaboration with community partners.

## Our Vision

Shiawassee County is a healthier and cleaner place to live, work, and visit.

# SHIAWASSEE COUNTY HEALTH DEPARTMENT

## Organizational Chart 2024



## Health Department Mandate

### The Constitution of the State of Michigan includes the following declaration:

*"The public health and general welfare of the people of the State are hereby declared to be matters of primary public concern. The Legislature shall pass suitable laws for the protection and promotion of public health."*

*"In 1978, the Public Health Code was passed by the Legislature and signed by the Governor. The "Code" establishes a state/local system to carry out the responsibility to protect and promote public health."*

### The Code established the Michigan Department of Public Health (now known as the Michigan Department of Health and Human Services) with the responsibility to:

*"...continually and diligently endeavor to prevent disease, prolong life, and promote the public health through organized programs, including prevention and control of environmental health hazards; prevention and control of diseases; prevention and control of health problems of particularly vulnerable population groups; development of health care facilities and health services delivery systems; and regulation of health care facilities and health services delivery systems to the extent provided by law."*

### The Department of Health and Human Services is charged in the Public Health Code to:

*"...promote an adequate and appropriate system of local health services throughout the state."*

### The Public Health Code requires every county to provide for a local Health Department. Local County Board of Commissions are required to organize County or District Health Departments.

### The Public Health Code charges the local Health Departments with the same basic responsibilities as are given to the State:

*"...continually and diligently endeavor to prevent disease, prolong life, and promote the public health through organized programs, including prevention and control of environmental health hazards; prevention and control of diseases; prevention and control of health problems of particularly vulnerable population groups..."*

**The Shiawassee County Board of Commissioners has responded to this mandate by establishing the Shiawassee County Health Department as a Department of Shiawassee County Government. Each year, through the County budget process and through contracts established with the State, the Board of Commissioners determines which programs and services will be established and maintained to respond to the legal requirements to promote and protect the public health of the citizens of Shiawassee County.**

**As one of the largest and most dynamic departments in County government, the Shiawassee County Health Department is a key link in the effort to provide our citizens with a better tomorrow by supporting solutions to today's health care, economic, environmental, educational and citizen security challenges:**

- Our Personal and Community Health Division assists both children and adults in becoming and staying healthy thereby allowing them to learn and become more productive.
- Our Environmental Health Division ensures clean water, safe disposal/treatment of sewage and safe restaurants. These activities provide a solid basis with which the County can attract new businesses, residents and tourists.
- Our Emergency Preparedness Division ensures that in the event of a public emergency such as a toxic chemical spill or pandemic outbreak, appropriate Federal, State, local and private partners will provide an appropriate response that will enable our citizenry to both be informed and feel secure.



### Administration

James P. Capitan Center, 2nd Floor  
149 E. Corunna Ave.  
Corunna, MI 48817  
8 am - 12 pm, 1 pm - 5 pm



### Environmental Health Division

Surbeck Building  
201 N. Shiawassee St.  
Corunna, MI 48817  
8 am - 12 pm, 1 pm - 5 pm



### Personal Health Division

James P. Capitan Center  
149 E. Corunna Ave.  
Corunna, MI 48817  
8 am - 12 pm, 1 pm - 5 pm

## Directory

### Administration

989-743-2318

### Director's Office

989-743-2344

### Personal Health Division

989-743-2356

### Personal Health Director's Office

989-743-2356

### Women, Infant and Children (WIC)

989-743-2383

### Environmental Health Division

989-743-2390

### Environmental Health Director's Office

989-743-2392

### Emergency Preparedness

989-743-2484



For more information visit our website at: [www.shiawasseechd.net](http://www.shiawasseechd.net)

